

Think about your daily life
What is the problem that directly affects you?



A Session Titled

From idea to public policy



Lebanese Youth Democracy Academy (DALY) – NWN
In partnership with MUBS University
Prepared by: Dana Saad Edeen



By the end of this session, you will be able to:

Understand the concept of public policy

Analyze a real-life problem

Identify relevant stakeholders and responsible actors

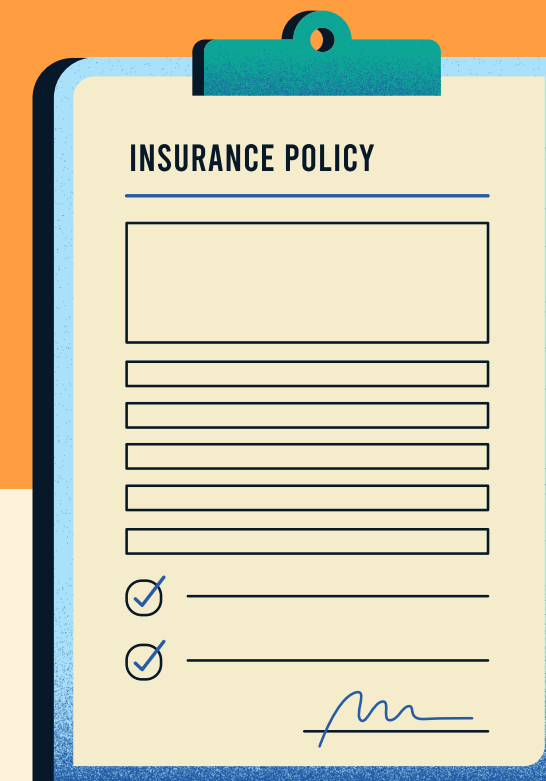
Develop a logical and feasible solution

Present your idea clearly and persuasively



What is public policy?

A set of decisions, plans, and actions developed by public authorities (such as governments) to address societal issues and achieve the public interest, through the design, implementation, and evaluation of specific programs and measures.



The difference between policy, project, and service.



The project

A time-bound activity with a specific goal

The service

Providing direct support to a specific group

The policy

A structured and sustainable solution at a broader level



A project is a temporary effort with a defined start and end, designed to achieve a specific objective or deliver a unique output.

Focus: Implementation of a specific goal

Timeframe: Short- to medium-term

Example: Building a new school or launching a training program



Service

A service is an ongoing activity or function provided to meet the continuous needs of people or beneficiaries.

Focus: Delivery and operations

Timeframe: Continuous

Example: Providing healthcare in a public hospital or running a school



Policy

A policy is a high-level set of decisions, rules, or guidelines created by authorities to achieve a long-term goal or address a public issue.

Focus: Direction and strategy

Timeframe: Long-term

Example: A national education policy to improve school quality



Levels of policy identification

The global level

The national level

The sectoral level

The local level

The community level





Global Level: The Paris Agreement (Example of a Climate Policy)

Global Level: The Paris Agreement (Climate Change Policy)

A global agreement adopted in 2015

Under the framework of the United Nations

Nearly all countries in the world participated in it

What does it require from countries?

Reducing greenhouse gas emissions (such as CO₂)

Transitioning to clean energy

Submitting national plans (NDCs)

Cooperating with other countries



National Level: Lebanon's Climate Policies (Response to the Paris Agreement)

After signing the Paris Agreement, countries commit to developing national policies to address climate change.

Lebanon is one of the countries that joined the agreement, and therefore it must translate this commitment into internal plans and actions.

At the national level, the role of the state is to translate agreements into actual laws and plans, such as supporting solar energy, setting regulations to reduce pollution, and encouraging individuals and companies to adopt environmentally friendly solutions.

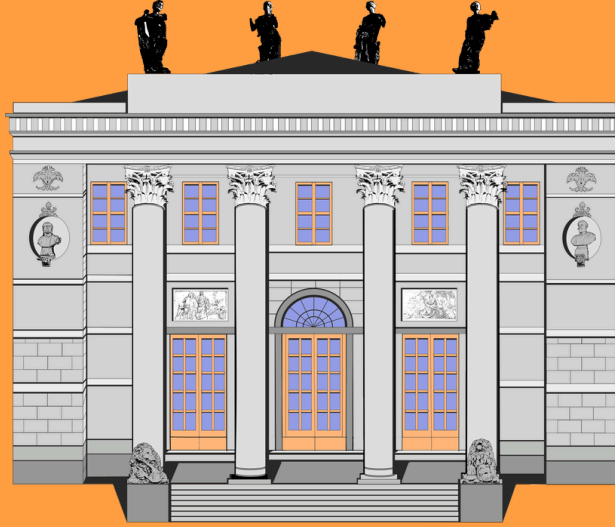


Sectoral Level: Implementing Policies Across Ministries and Sectors

After policies are established at the national level, they are implemented through specific sectors

Each sector takes on part of the responsibility according to its area of expertise.

At the sectoral level, different entities are responsible for implementing policies. For example, the Ministry of Energy works on developing renewable energy projects, the Ministry of Transport seeks to improve public transportation and reduce emissions, the Ministry of Industry enforces environmental standards on factories, and the Ministry of Environment monitors pollution and leads environmental initiatives



Local Level: The Role of Municipalities in Implementing Climate Policies

Policies move from the national and sectoral levels to the local level. Municipalities play a key role in direct implementation on the ground.

The local level is the stage where policies begin to appear in people's daily lives, as municipalities implement these policies through direct services and projects such as waste management, improving street lighting, and organizing environmental matters within the city.



Community Level: How Policies Translate into Our Daily Lives

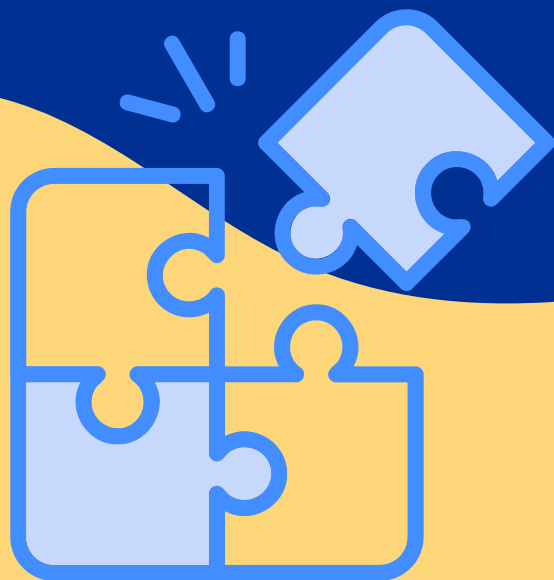
The community level is the stage where policies are translated into daily behaviors practiced by individuals. At this level, people play a key role in the success of policies through their commitment and participation in .applying them in their everyday lives

In other words, what begins as a global agreement and evolves into plans and projects ultimately reaches individuals, where it is translated into real-life practices.

Selecting and analyzing the problem

You will be divided into working groups

You can choose any problem you face in your daily life (economic, social, environmental/climate, etc.).



Choosing a problem and how it affects (others / people / society)



Who are the most affected? And why?



Does this problem exist at the global level?



Where does it appear in your daily life?



What will happen if it continues without a solution?



We will continue with the same groups and the same previously selected problem.

Developing the solution

Action

What are the possible solutions?

What is the most realistic solution?

Who is responsible for implementation?

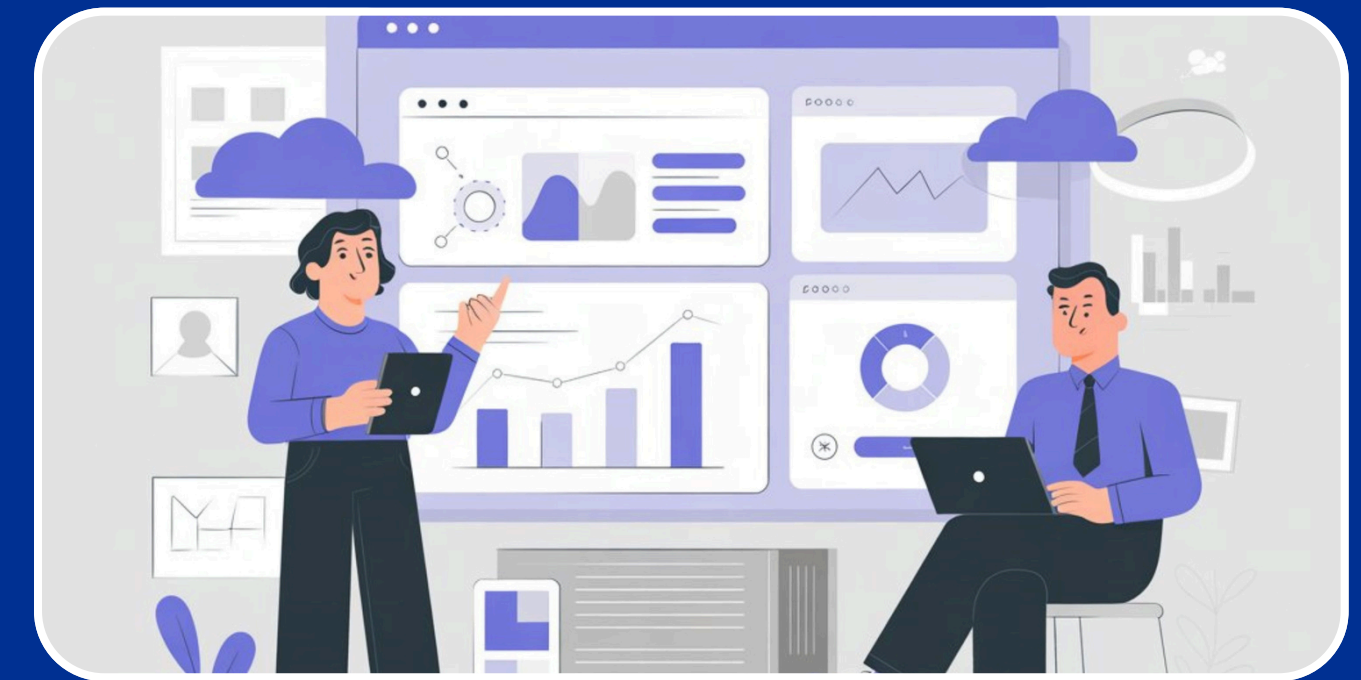
What resources are required?

Outcome

What will happen in the short term?

Impact

What is the expected change in the long term?



(Pitch)



**Example: A specific group [target group] is facing the problem of [problem] due to [reasons].
We propose [the proposed solution].
It will be implemented by [the responsible entity].
This will lead to [the expected impact].**



The pitch should include

Defining the problem

The importance of the problem

The proposed solution

The expected impact

The entity responsible for implementation

Ideas that are not organized remain opinions, but when they are properly structured, they become policies capable of creating real change